

Friday 31st January 2025



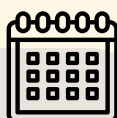
## Coming Up

Next Wednesday we will be visited by an Olympian. The children will have chance to ask questions and work alongside them. This is a wonderful experience for our children and I know they are very excited to have this opportunity.



## Diary Dates

### Dates For Your Calendar



#### Spring Term

**05.02.25** Athlete/Olympian visit to school  
**07.02.25** Elite festival multi-sports  
**07.02.25** NSPCC Number Day  
**11.02.25** Year 6 Samba performance 10.15am  
**12.02.25** Sheffield Young Voices  
**14.02.25** Y1 Educational visit in school Dinostars  
**26.02.25** Y2 educational visit to Pontefract Castle  
**03.03.25** World Book Day  
**04.03.25** Y5 visit to SLA for Wonderdome  
**wc 10.03.25** Science Week  
**wc 10.03.25** Book Fair  
**27.03.25** Year 5 Magna educational visit  
**31.03.25** Year 3 and 4 Spring singing performance

More dates and events will be added in due course.



## Update from Miss Cartwright

Happy Friday everyone,

This week we saw the return of the Spelling Bee. It was another fantastic event where enthusiastic children battled against the buzzers to win gems for their house. Well done to Swale for winning the Year 1-3 Spelling Bee and well done Wharfe for winning the Year 4 - 6 Spelling Bee.

This week saw Year 5 take on the Emile spelling competition. This is a competition where all Year 5s in the Trust go against each other to be the overall winner. **THE VALE WON!** Next week it is the turn of Year 6.

I have seen some amazing writing in Y4 this week. Children completed some short burst writing using fronted adverbials and WOW what amazing writing they produced. There are some very talented writing in Year 4 and I cannot wait to see what they achieve next.

Thank you to all of those who contributed to the Bags2 School collection. The clothes will go off to help those in need.

Finally a huge shout out to Year 1 for some amazing homework. In the picture below we have some work on senses from Olly (lots of it too!). We have some beautiful artwork from Hallie showing the extinction of the dinosaurs. Finally we have Bailie with an amazing crochet King Charles, as well as some wonderful art work. Well done to everyone in Year 1 who have done some homework.

Have a wonderful weekend.

Miss Cartwright



# Early Years

## Reception

Reception have enjoyed learning all about Lunar New Year this week. We have read the story 'The Great Race' which told us all about the Chinese zodiac. We have also learned about how Lunar New Year is celebrated around the world and have made our own paper lanterns. In maths, children have started to learn all about 6, 7 and 8 and how the numbers are represented in different ways. In addition to this, the children have shown a great interest in bird watching this week! We went for a walk around the school grounds identifying the different birds we could see. Please post on dojo if children identify any more at home!

Thank you to all the parents/carers that attended our stay and play this week, the children loved showing you around our classroom and completing some activities with you. It was wonderful to see so many of you and show you some of our learning.

## Nursery

This week in nursery we enjoyed a stay and play with our grown ups and shared the cake we made to finish our story of Little Red Riding Hood. We have now started our new text The three Billy Goats Gruff. The children have worked very hard exploring the composition of 4 in maths and are ready to begin learning all about 5 next week. In PSHE we discussed setting goals for ourselves and how to persevere and not to give up when things get tricky.



# Year 1

Year 1 P.E. is now on a Tuesday. Please ensure the children bring the correct PE kit every week.

In maths, we have taken on the challenge of recognising and making equal groups. I have been very impressed with the resilience the children have shown as we have started our multiplication and division unit.

In our science lesson, we have learnt about how animals eat different things. We have learnt that animals can be carnivores, omnivores or herbivores.

In our DT lesson, we designed our own healthy packed lunchbox and discussed how we can incorporate a variety of healthy foods into our daily diet. In our next session, we will learn how to prepare food and vegetables so we can make a salad!

**Miss Roberts**



# Year 2

Year 2 have PE on a Tuesday in the Spring term, please ensure your child comes to school with their full, labelled PE kit.

This week Year 2 have continued their history, focussing on Pontefract castle and why it is important to our area. We have also look at The Apostles in RE and thought about why they were important to Jesus, within the Christian faith.

In writing, we have written our own Fantasy tales. I have been really impressed with the children's use of similes, sentences of 3 and adverbs. Ask your child to retell their story to you, I know you'll be impressed!

Year 2 also welcomed 2 new additions to our class... take a look in the picture!

**Mr Bosanquet**





## Year 3

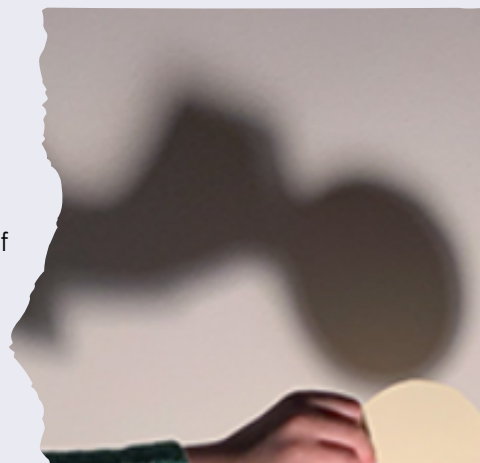
Year 3 have PE on Friday and Forest School on Thursday

This week Year 3 have been working super hard on their morning activities - fluent in five. Really impressive scores Year 3, keep up the good work!

In DT we designed and labelled our own coal mining helmets. We ensured that we included a light source, a battery, a switch, and sturdy materials to make sure it can withstand the harsh conditions of a coal mine.

In science, Year 3 learnt all about what shadows are, how they are made, and the best material to create a shadow - any opaque material.

**Miss Goodall**



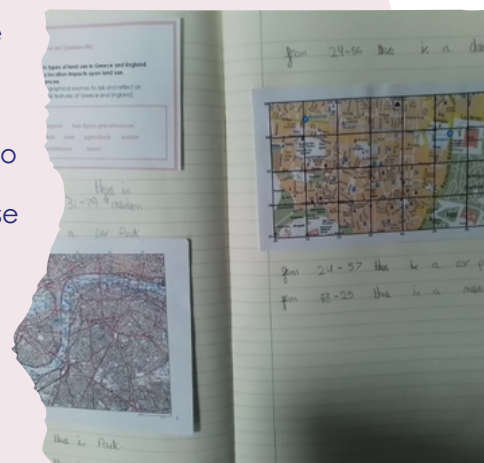
## Year 4

This term Year 4 have P.E on Mondays and Forest School on a Thursday. Please ensure that children bring something warm to wear and a spare pair of shoes for Forest School.

This week, we have been using OS maps and our knowledge of map symbols to locate various land uses in both London and Athens. We compared the land uses in both capital cities to rural and coastal areas and discussed that land use differs depending on the physical features in an area.

We have also been learning some very tricky maths this week, subtracting fractions from whole numbers. We have been drawing bar models to help us with this.

**Miss Capper**



## Year 5

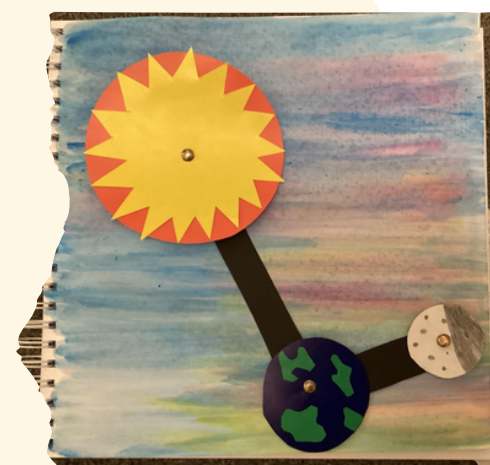
Year 5 now have PE on Wednesdays and swimming on Friday.

Year 5 have had a very busy practical week this week! We have created our own paper databases in computing before learning how this can be done electronically to save time.

In PE, we have been practising the hand jive with a throw back to the Rock and Roll era!

In Science, we had great fun building our own replicas of the solar system, paying close attention to the different colours of each planet. It has been wonderful to see the beautiful artwork from home that the children have created too! Please keep sharing on our class Dojo!

**Miss Prout**



# Year 6

This term Year 6 have PE on a Tuesday. Please ensure the children bring the correct PE kit every week.

This week Y6 loved PE. We are currently learning 'Bhangra Dance' and the children enjoyed identifying the dynamics of bhangra. The children performed the 5 different bhangra motifs (jump, jump and clap, turn, roll and star, travel) in small groups.

We have an arithmetic lesson on a Friday and Year 6 have been working hard to beat last weeks score. They showed determination, resilience and I am very impressed with their hard work! Well done Year 6.

Miss Burgess



## Safeguarding



Ensuring our pupils are safe and well looked after is our key priority.

**Miss H Prout :**  
**Designated Safeguarding Lead**

**Miss S Cartwright:**  
**Deputy Safeguarding Lead**

**Mrs S Brain, Miss E Burgess, Mrs R Pearson:**  
**Safeguarding officers**

All staff have received Safeguarding training to ensure that they can recognise signs and symptoms of abuse and also how to report/act if a disclosure is made.

Concerns about the safety or welfare of a child? Contact us: 01977 722485

Out of hours contact number:  
03458 503503

For more information:  
<https://thevpacademy.org.uk/knowledge-base/safeguarding/>

## Attendance



### Attendance matters.

Coming to school on time, every day is vital to achieving the best possible outcomes as well as learning good habits which will benefit everyone in the future. Please see our updated attendance policy.

EYFS	97%
Y1	93%
Y2	95%
Y3	99%
Y4	99%
Y5	97%
Y6	96%

## Providing children with positive experiences and strategies to embed emotional resilience.

We use The Thrive Approach as a whole school strategy to promote positive mental health and wellbeing of which when this is present in children's lives it has been proven to improve their attendance, behaviour and attainment.

This allows our children to become confident, curious, creative and capable, therefore opens doors to a bright future for our children.

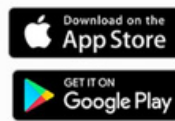


## 50 THINGS TO DO AT HOME

### Download THE MOBILE APP

50 Things To Do Before You're Five gives you 50 activities that parents and carers can support their children to try out and repeat.

Download the mobile app from Apple AppStore or Google PlayStore...



Scan the QR code with your smartphone to take you to the 50 Things To Do Before You're Five app...

For information regarding mental health support & advice, please visit the below links:

<https://wf-i-can.co.uk/u13/home/>

<https://www.compass-uk.org/services/wakefield-children-and-young-peoples-emotional-health-and-wellbeing-service/>

## Inclusion & SEND



At The Vale Primary Academy we are committed to providing an inclusive education for all our children. This means that any child who may have Special Educational Needs or a Disability (SEND) will have access to additional or specialist support throughout their life at our academy. All teachers are responsible for every child in their care, including those with special educational needs and disabilities.

Did you know about the MAX Card?  
The MAX entitles any family with a child who has SEND or is a looked after family, hundreds of discounts across the county. Its is completely FREE to sign up. Please use the link below to get yours ASAP!

[https://mymaxcard.co.uk/local-distributors/?\\_council\\_type=2&\\_council\\_region=yorkshire-and-the-humber&\\_council\\_area=wakefield](https://mymaxcard.co.uk/local-distributors/?_council_type=2&_council_region=yorkshire-and-the-humber&_council_area=wakefield)

To find out what services Wakefield provide for the SEND community, please visit the following link - <https://wakefield.mylocaloffer.org/>

For further support, please contact a member of the Inclusion team:

- The main office who can pass a message on
- Your child's class teacher
- Miss H Prout - Designated Safeguarding Lead & Assistant Principal
- Miss S Cartwright - Head of Academy & Deputy Designated Safeguarding Lead

